

Draw each interval, using the given note as the lower note.

min 6th Aug 6th min 2nd Aug 2nd dim 5th Perf 4th Maj 6th dim 7th

Identify by letter name and quality. Use uppercase letters for Major, Augmented, and 7th chords; use lowercase for minor or diminished. (ex: "G Maj", "A Aug", "Bb7", "b min", "d dim")

Identify each chord by roman numeral in the given key. Use uppercase for Major or 7th chords, lowercase for minor.

A Major: _____ ab minor: _____ a minor: _____ B Major: _____ Ab Major: _____ B Major: _____

Write out a transposition of the following melody and accompaniment in the blank staff. The new Major key signature is provided.

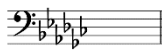
I I V V7 I

I I V V7 I

Identify each key signature. Use uppercase for Major and lowercase for minor.



_____ & _____

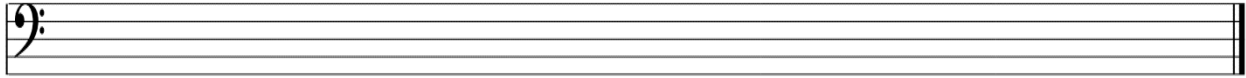


_____ & _____



_____ & _____

Write out an ascending b-flat harmonic minor scale. Include all accidentals.



Fill each box with ONE note, based on the given time signature.



Write the letter of the correct answer in the blank.

- | | |
|--------------------------|--|
| _____ G. Handel | A. Rhythmically free playing, “stolen time” |
| _____ <i>rubato</i> | B. A Modern composer, wrote music to <i>Peter & the Wolf</i> |
| _____ <i>accelerando</i> | C. A Baroque composer, composed the <i>Messiah</i> and keyboard suites |
| _____ S. Prokofiev | D. Gradually increase the tempo |

Be prepared to identify the following composers:

- | | | | |
|--------------|--------------|----------------|--------------|
| J.S. Bach | W. Mozart | F. Chopin | C. Debussy |
| D. Scarlatti | L. Beethoven | P. Tchaikovsky | S. Prokofiev |
| G. Handel | | | G. Gershwin |