


Draw each interval, using the given note as the lower note.



Perf 5th Maj 2nd min 7th min 6th Aug 6th min 2nd Maj 3rd dim 7th

Identify by letter name and quality. Use uppercase letters for Major, Augmented, and 7th chords; use lowercase for minor or diminished. (ex: "G Maj", "A Aug", "Bb7", "b min", "d dim")

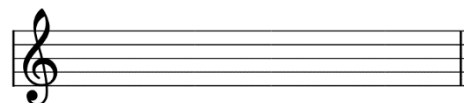


Identify each chord by roman numeral in the given key. Use uppercase for Major or 7th chords, lowercase for minor.



e minor: _____ B Major: _____ Gb Major: _____ Db Major: _____ g minor: _____

Draw root position, 1st inversion, and 2nd inversion triads of the tonic chord in D Major.



Write out the left-hand accompaniment, using whole-note chords for each roman numeral.

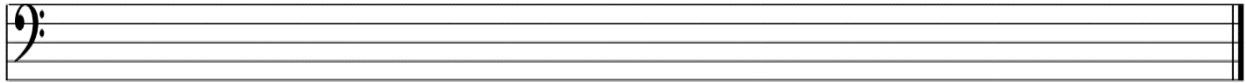


Identify each key signature. Use uppercase for Major and lowercase for minor.

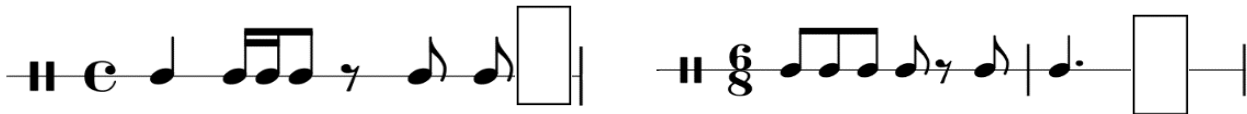


_____ & _____ _____ & _____ _____ & _____

Write out an ascending f harmonic minor scale. Include all accidentals.



Fill each box with ONE note, based on the given time signature.



Write the letter of the correct answer in the blank.

- | | |
|--------------------------|---|
| _____ F. Chopin | A. Contains: Exposition, Development, & Recapitulation |
| _____ <i>sfz</i> | B. Not too much! |
| _____ Sonata form | C. A Modern composer, wrote <i>Rhapsody in Blue</i> and <i>Porgy and Bess</i> |
| _____ Sempre | D. Suddenly with force |
| _____ ABA form | E. ABACA, or ABACABA |
| _____ Rondo form | F. Always |
| _____ W. A. Mozart | G. Material (often a melody) repeated in altered form |
| _____ Theme & Variations | H. A Classical composer, wrote piano concertos and <i>The Magic Flute</i> |
| _____ G. Gershwin | I. A Polish Romantic composer, wrote lyrical and virtuosic piano music. |
| _____ D. Scarlatti | J. A Baroque composer, wrote many virtuosic keyboard “sonatas” |
| _____ Non troppo | K. A three-part form |

Be prepared to identify the following composers:

- | | | | |
|--------------|--------------|----------------|--------------|
| J.S. Bach | W. Mozart | F. Chopin | C. Debussy |
| D. Scarlatti | L. Beethoven | P. Tchaikovsky | S. Prokofiev |
| G. Handel | | | G. Gershwin |