

Draw in the missing barlines.



Fill in the missing time signature.



Identify each interval by number and quality. P = Perfect, M = Major, m = minor.



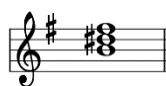
Identify by letter name and chord quality. Use uppercase for Major and 7<sup>th</sup> chords, lowercase for minor. (ex: "G Maj", "F7", "a min"). The first answer is provided.



Identify each chord by roman numeral in the given key.



Ab major: \_\_\_\_\_



e minor: \_\_\_\_\_



b minor: \_\_\_\_\_



Circle the  
Augmented triad.



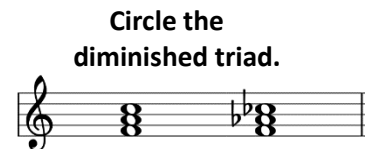
Bb major: \_\_\_\_\_



B major: \_\_\_\_\_

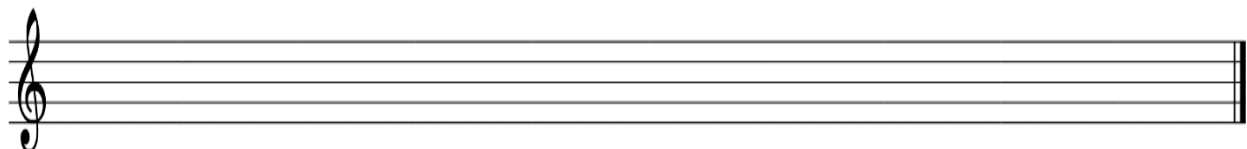


A Major: \_\_\_\_\_



Circle the  
diminished triad.

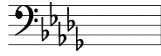
Write out an ascending Db Major scale. Include applicable accidentals.



Identify the following key signatures. Use uppercase for Major and lowercase for minor.



\_\_\_\_\_ & \_\_\_\_\_



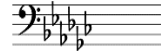
\_\_\_\_\_



\_\_\_\_\_ & \_\_\_\_\_



\_\_\_\_\_



\_\_\_\_\_



\_\_\_\_\_

Write the letter of the correct answer in the blank.

\_\_\_\_\_ Meno mosso

A. Slowly, broadly

\_\_\_\_\_ Più mosso

B. Compound Meter

\_\_\_\_\_ Moderato

C. Moderately

\_\_\_\_\_ Vivace

D. Slower, less motion

\_\_\_\_\_ Largo

E. Lively, fast

\_\_\_\_\_ Beats are divided in 3s

F. Faster, more motion

Place the 4 historical eras in order (*Romantic, Modern, Classical, Baroque*). Start with the earliest era.

\_\_\_\_\_

(earliest) —————> (most recent)