

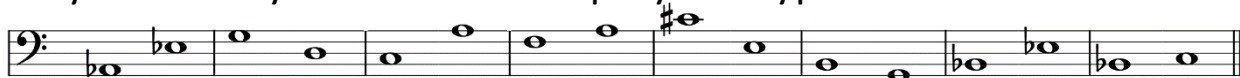
Draw in the missing barlines.



Fill in the missing time signature.

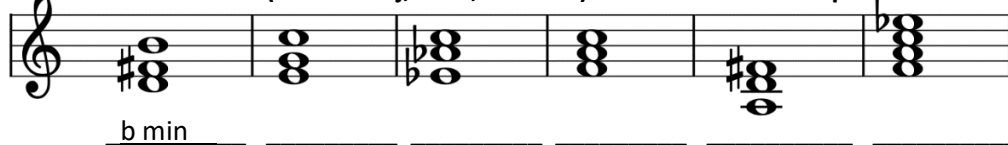


Identify each interval by number. Each interval's quality is already provided.



Perfect \_\_\_\_ Perfect \_\_\_\_ Major \_\_\_\_ Major \_\_\_\_ Major \_\_\_\_ Major \_\_\_\_ Perfect \_\_\_\_ Major \_\_\_\_

Identify by letter name and chord quality. Use uppercase for Major and 7<sup>th</sup> chords, lowercase for minor. (ex: "G Maj", "F7", "a min"). The first answer is provided.

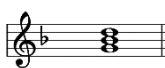


b min \_\_\_\_\_

Circle the  
Augmented triad.



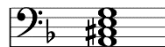
Identify each chord by roman numeral in the given key.



d minor: \_\_\_\_\_



Bb major: \_\_\_\_\_



d minor: \_\_\_\_\_



G major: \_\_\_\_\_



Eb major: \_\_\_\_\_



A Major: \_\_\_\_\_

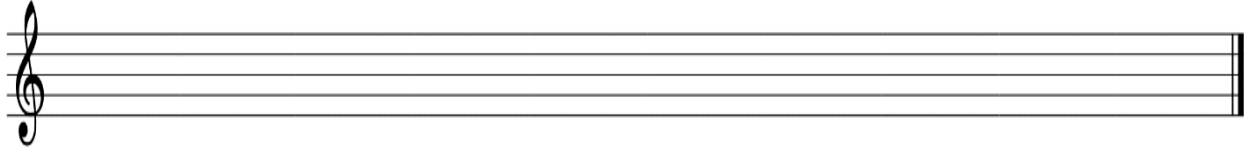
Circle the  
diminished triad.



Write out the Order of Sharps as they appear in a key signature (from left to right).

\_\_\_\_\_

Write out an ascending d harmonic minor scale. Include applicable accidentals.



Identify the following key signatures. Use uppercase for Major and lowercase for minor.



Write the letter of the correct answer in the blank.

- |                           |                     |
|---------------------------|---------------------|
| _____ Dominant            | A. <i>cantabile</i> |
| _____ Sweetly             | B. <b>IV</b>        |
| _____ Tonic               | C. phrase           |
| _____ Marked, forcefully  | D. <i>dolce</i>     |
| _____ Subdominant         | E. <b>I</b>         |
| _____ A musical thought   | F. <b>V</b>         |
| _____ In a singing manner | G. <i>marcato</i>   |