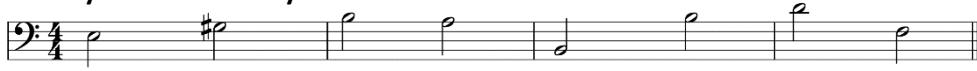


Identify each interval by number.

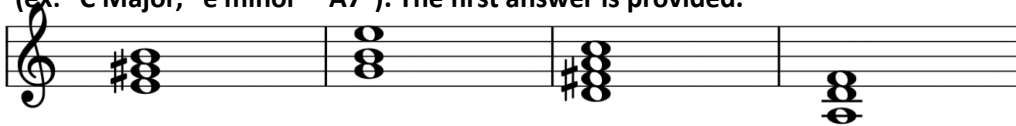


\_\_\_\_\_

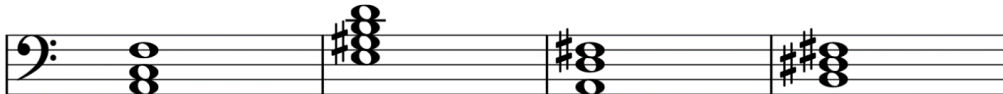


\_\_\_\_\_

Identify each chord by letter & quality. Use uppercase for Major or 7<sup>th</sup> chords, lowercase for minor. (ex: "C Major, "e minor" "A7"). The first answer is provided.



E Major

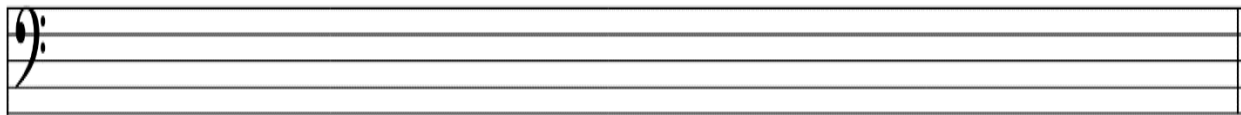


\_\_\_\_\_

Fill in the missing time signature.



Write out an ascending E Major scale. Include applicable accidentals.



Identify each key signature.

Use uppercase for Major, and lowercase for minor when a second line is provided.



\_\_\_\_\_ & \_\_\_\_\_



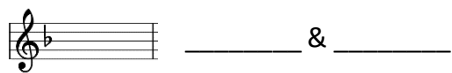
\_\_\_\_\_



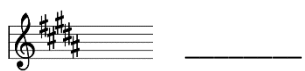
\_\_\_\_\_



\_\_\_\_\_ & \_\_\_\_\_



\_\_\_\_\_ & \_\_\_\_\_



\_\_\_\_\_

Write the letter of the correct answer in the blank.


\_\_\_\_\_ Triad

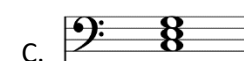


A.

\_\_\_\_\_ Seventh Chord

B. *D.C.*

\_\_\_\_\_ Go back to the 



C.

\_\_\_\_\_ Go back to the beginning.

D. *D.S.*

Place the following tempos in order, starting with the fastest and ending with the slowest.

Andante

Adagio

Allegro

Presto

